

WELLINGTON GEOLOGICAL STRUCTURE

- Sandstone lithofacies
 - Thick-bedded lithofacies
 - Thin-bedded lithofacies
 - Quaternary deposits*
 - Volcanics
 - Crush zones
- } Greywacke-suite rocks
- Strike and dip, face unknown. Strike only
 - Strike and dip, face known
 - Strike and vertical dip, face unknown
 - Strike and vertical dip, face known
 - Strike and dip, beds overturned
 - Inverted syncline
 - Antiform showing plunge
 - Faults
 - Lithofacies boundaries
 - Fossil locality, in situ

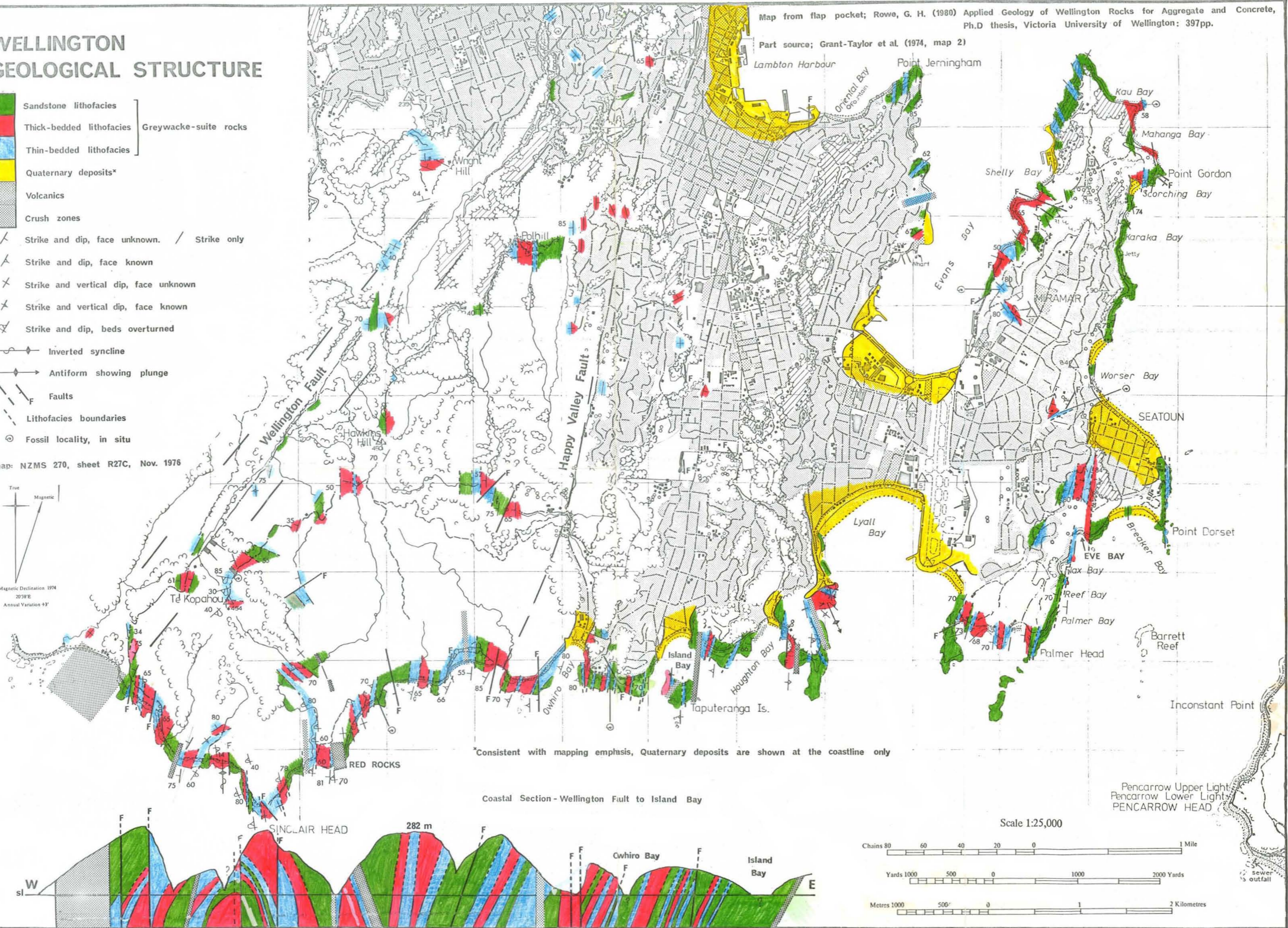
Base map: NZMS 270, sheet R27C, Nov. 1976

True
Magnetic

Magnetic Declination 1974
20°38'E
Annual Variation +3'

Map from flap pocket; Rowe, G. H. (1980) Applied Geology of Wellington Rocks for Aggregate and Concrete, Ph.D thesis, Victoria University of Wellington: 397pp.

Part source; Grant-Taylor et al. (1974, map 2)



*Consistent with mapping emphasis, Quaternary deposits are shown at the coastline only

Pencarrow Upper Light
Pencarrow Lower Light
PENCARROW HEAD

