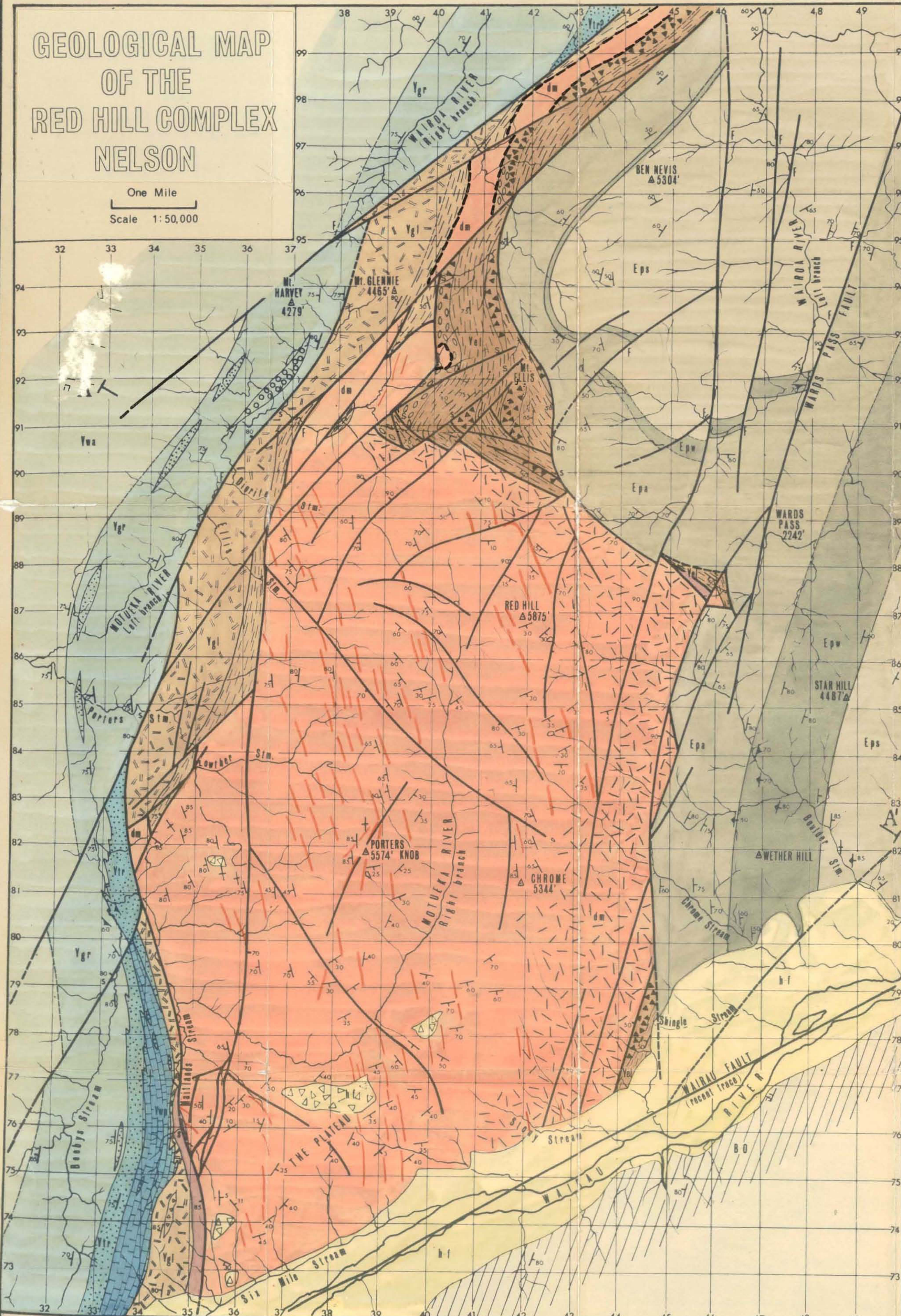


GEOLOGICAL MAP OF THE RED HILL COMPLEX NELSON

One Mile
Scale 1:50,000



LEGEND

Formation	Group	Age
River gravel		Quaternary
Moraine		Quaternary
Greywacke and argillite	Toriesse Group	Jurassic-Triassic
Red and green Laminated argillite	Waiua	Maitai Group
Grey laminated argillite Green sandstone Igneous conglomerate	Greville	
Blue and green sandstone	Tramway	
Limestone Sandstone and grit	Wooded Peak	Permian
Serpentine, peridotite, gabbro Protoclastic Harzburgite	Dun Mountain Basal Zone Ultramafics	
Contact metamorphic rocks		
Spilitic dolerite and basalt Red and green volcanic breccia Sandstone and argillite	Glennie	Lee River Group
Pillow lava Volcanic breccia Sandstone and argillite	Goat	
Green sandstone, grey argillite	Ward	Pelorus Group
Red and green sandstone and argillite	Wether	
Blue and grey sandstone and argillite	Star	

SYMBOLS

- Strike and dip. Layering or bedding
- Strike and dip. Younging in direction of dip.
- Strike and dip. Beds overturned
- Lithological boundary
- Lithological boundary inferred
- Fault. Dip as shown.
- Fault inferred.
- Mafic dykes
- F Crush Zone.
- S Cold serpentinite intrusion.

ERRATA

(i) Lithological boundaries and faults within one mile south of Mt Ellis in error. For correction see figure 17.
 (ii) In the cross-section and proceeding into the ultramafic mass from the west, the second fault is incorrectly shown downthrown to the east. The corrected cross-section is shown in figure 21.
 (iii) Strike and dip symbols within the ultramafic body refer either to single or late layering. See page 113.

