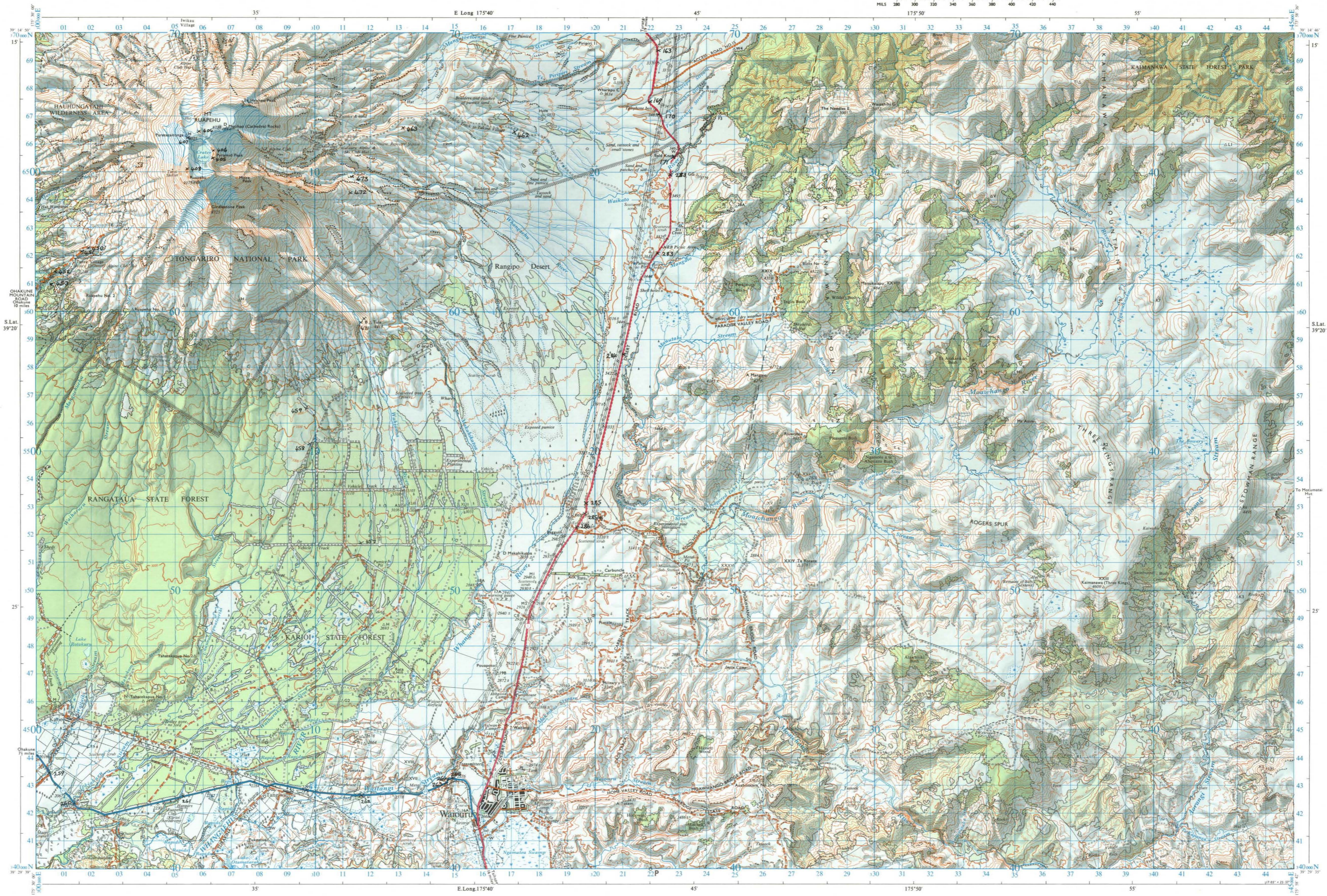
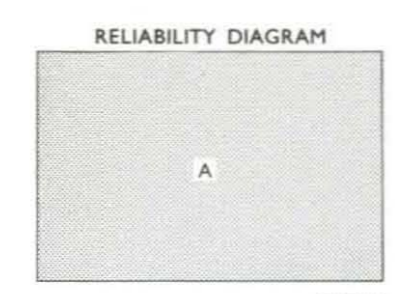
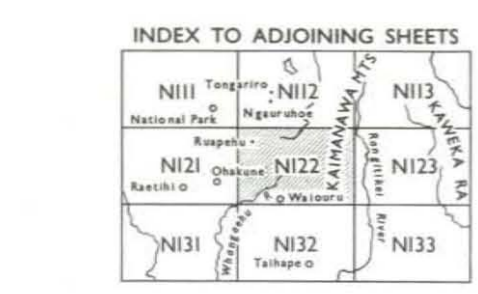
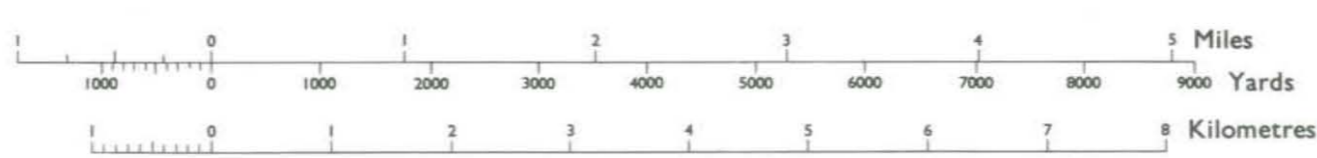


- REFERENCE**
- Railways**
- Double or multiple track
  - Single track
  - Road over railway
  - Railway over road
  - Level crossing
  - Station
  - Tunnel
  - Cutting
  - Embankment
  - Footbridge
  - Bush tramway
- Roads**
- Three lanes or more wide
  - Sealed
  - Macadam
  - Unimproved
  - Tracks:
  - Vehicle
  - Foot
  - State Highways:
  - National
  - Provincial
- Bridges**
- Two lanes
  - One lane
  - Concrete
  - Wooden
  - Steel
  - Suspension
  - Footbridge
  - Ford
- Electric Power Lines**
- Transmission lines (over 11,000 volts)
  - Pylons, aerial positions
  - Poles, conventional spacing
  - Distribution lines (11,000 volts and under)
- Vegetation**
- Bush
  - Plantation
  - Orchard
  - Scrub
  - Burnt or fallen bush
  - Trees
- Hydrography**
- Drain
  - Drain beside fence
  - Water race
  - Stream or watercourse
  - Indefinite stream
  - Dam; Waterfall
  - Cold spring, Hot spring
  - Swamp
  - Mangrove
  - Sand
  - Shingle
  - Sand & Mud
  - Rocks
- Contours**
- Index
  - Intermediate
  - Supplementary
  - Depression
- Blue contours indicate snow areas at time of photography (Summer 1964)*
- Miscellaneous**
- Trig station
  - Built up area
  - Bench mark
  - Church
  - Evolution in feet
  - Building
  - Post and Telegraph Office
  - Homestead
  - Delirium
  - Post Office only
  - Cemetery
  - Telephone only
  - Radio masts
  - Telephone line
  - Historical moon pit
  - Soddy
  - Windmill
  - Sandhill
  - Mesa
  - Rock outcrop
  - Lighthouse
  - Cliff or terrace
  - Mine, underground
  - Sip
  - Mine, open-cast
  - Cave
  - Gravel pit
  - Fence or hedge
  - Quarry
  - Sagbank
  - Pipeline
  - National Park Boundary
  - Wilderness Area Boundary



# RUAPEHU

The vertical interval between the contours is 100 feet  
Scale 1:63,360 (1 inch to 1 mile)



Transverse Mercator Projection, International (Hayford) Spheroid  
Origin of Projection 175° 30' E. Long. 39° 00' S. Lat.  
The grid and graticule on this map are in terms of Geodetic Datum 1949  
All grid coordinates on this map are in terms of False Origin  
False Origin is (700,000 yds West) of True Origin  
True Origin is (400,000 yds South) of True Origin  
True Origin is 175° 30' E. Long. 39° 00' S. Lat.  
True North  
At the West edge of this map is 0° 00' 00" or 0.0 Mile E of Grid North  
At the East edge of this map is 0° 18' 10" or 3.4 Mile E of Grid North  
Height Datum: Mean Sea Level  
The representation on this map of a road or track is no evidence of the existence of a right of way  
Contours through bush, forest and ice areas may be of lower reliability  
± indicates a height of lower reliability

**TO GIVE A GRID REFERENCE ON THIS MAP**  
Disregard the smaller coordinates in the margins. They are for finding grid coordinates or grid square numbers. Pay attention to the larger marginal figures and to those printed on the face of the map.

**Point 7 Waitangi**

East	North
Take west edge of square in which point lies and read the large figure opposite the line on north or south margin or on the line itself for the face of the map. Estimate tenths eastward.	Take north edge of square in which point lies and read the large figure opposite the line on east or west margin or on the line itself for the face of the map. Estimate tenths northward.
175	45
1751	452
<b>REFERENCE</b> 175452	

Unit: Square = 1000 yards  
Reference to the nearest 100 yards  
This map lies in Grid Square N33

